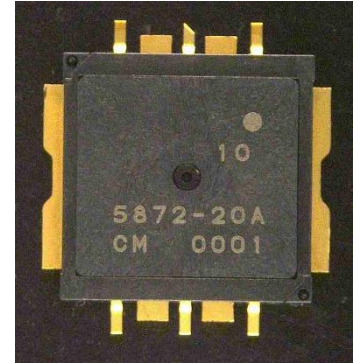


■ Features

- High Output Power: P5dB=43.0dBm (Typ.)
- High Gain: GL=12.0 to 13.0dB (Typ.)
- High Power Added Efficiency: PAE=41% (Typ.)
- Broad Band: Frequency=5.85 to 7.2GHz
- Internally Matched
- Plastic Package for SMT applications

■ Description

The SGK5872-20A is a high power GaN-HEMT that is internally matched for standard communication bands to provide optimum power and linearity.



ABSOLUTE MAXIMUM RATING (Case Temperature T_c=25 deg.C)

Item	Symbol	Rating	Unit
Drain-Source Voltage	V _{DS}	26	V
Gate-Source Voltage	V _{GS}	-10	V
Total Power Dissipation	P _T	48	W
Storage Temperature	T _{stg}	-40 to +125	deg.C
Channel Temperature	T _{ch}	250	deg.C
Input Power	Pin	38	dBm

RECOMMENDED OPERATING CONDITION

Item	Symbol	Condition	Limit	Unit
Drain-Source Voltage	V _{DS}		<=24	V
Forward Gate Current	I _{GF}	Rg=100ohm	<=4.0	mA
Reverse Gate Current	I _{GR}	Rg=100ohm	>=-1.9	mA
Channel Temperature	T _{ch}		<+192	deg.C

ELECTRICAL CHARACTERISTICS (Case Temperature T_c=25 deg.C)

Item	Symbol	Condition	Limit			Unit
			Min.	Typ.	Max.	
Saturated Drain Current	I _{DSS}	Vds=10V, Vgs=0V	-	3.9	-	A
Trans Conductance	g _m	Vds=24V, Ids=0.8A	-	1.8	-	S
Pinch-off Voltage	V _p	Vds=24V, Ids=0.8mA	-	-3	-	V
Frequency Range	f	Vds=24V-typ.	5.85	-	7.2	GHz
Output Power at 5dB G.C.P.	P _{5dB}	Ids(DC)=1.0A-typ.	41.5	43.0	-	dBm
Linear Gain at Pin=20dBm	GL	Vgs=constant *1:f=5.85 to 6.53 GHz *2:f=6.53 to 7.2 GHz	11.0 ^{*1}	13.0 ^{*1}	-	dB
			11.0 ^{*2}	12.0 ^{*2}	-	dB
Drain Current at 5dB G.C.P.	I _{DSR}		-	1.6	2.4	A
Power Added Efficiency at 3dB G.C.P.	PAE		-	41	-	%
3rd Order Inter Modulation Distortion	IM ₃	f=5.85GHz, 7.2GHz Δf=10MHz, 2-tone Test Pout=27.5dBm (S.C.L.)	-40.0	-43.0	-	dBc
Thermal Resistance	R _{th}	Channel to Case (T _c =25deg.C, P _{diss} =24W)	-	2.7	3.4	deg.C/W
Channel Temperature Rise	ΔT _{ch}	(V _{DS} × I _{DSR} - Pout + Pin) × R _{th}	-	61	150	deg.C

G.C.P. : Gain Compression Point, S.C.L. : Single Carrier Level

CASE STYLE	I2C
RoHS Compliance	YES
ESD ^{*1}	Class 2
MSL	2
	2000V to <4000V
	One year after opening the packing

Note : ^{*1} Based on ANSI/ESDA/JEDEC JS-001-2012(C=100pF, R=1.5kohm)

Ordering Information

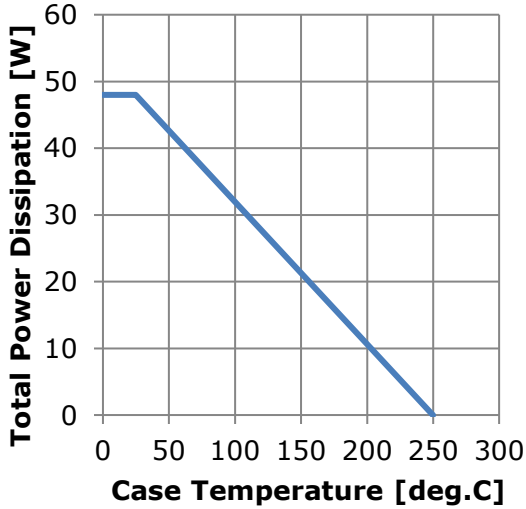
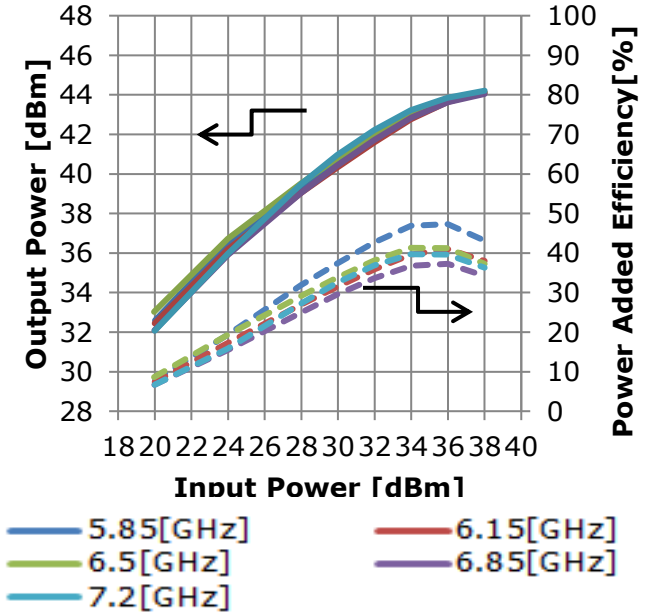
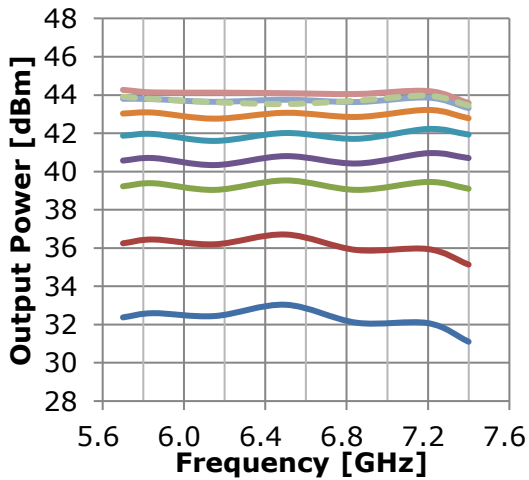
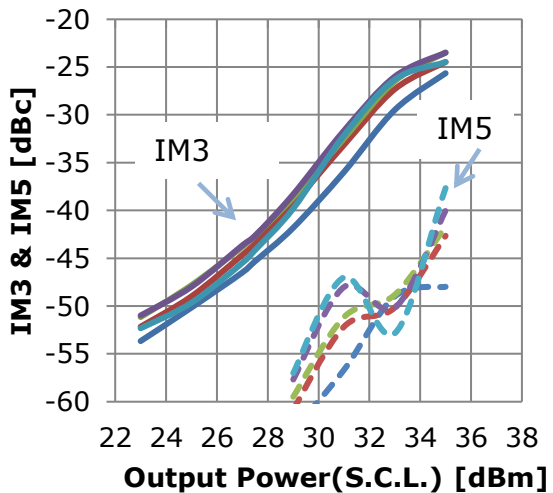
Model Type	MOQ	MOU	Packing Style
SGK5872-20A	15pcs	No Limitation	50pcs-max./Tray , 1Tray-max./Packing
SGK5872-20AT	500pcs	500pcs	24mm width Tape (500pcs/Reel)

* MOQ stands for Minimum Order Quantity.

* MOU stands for Minimum Order Unit size.

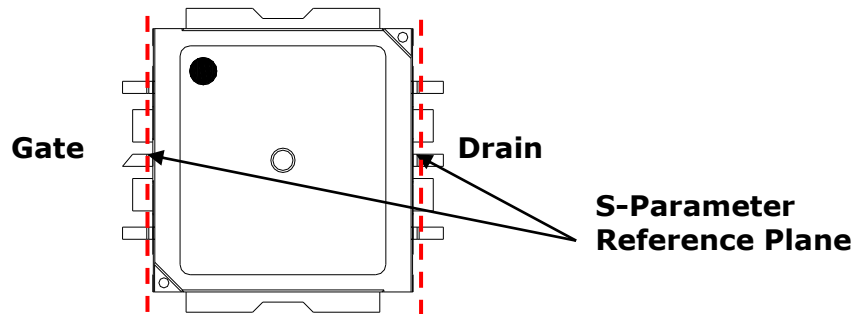
Note

- This device will not be delivered with test data but tested pass/fail 100% against DC and RF specifications.
- NO liquid cleaning process is suitable for this device. (including de-ionized water or solvent)

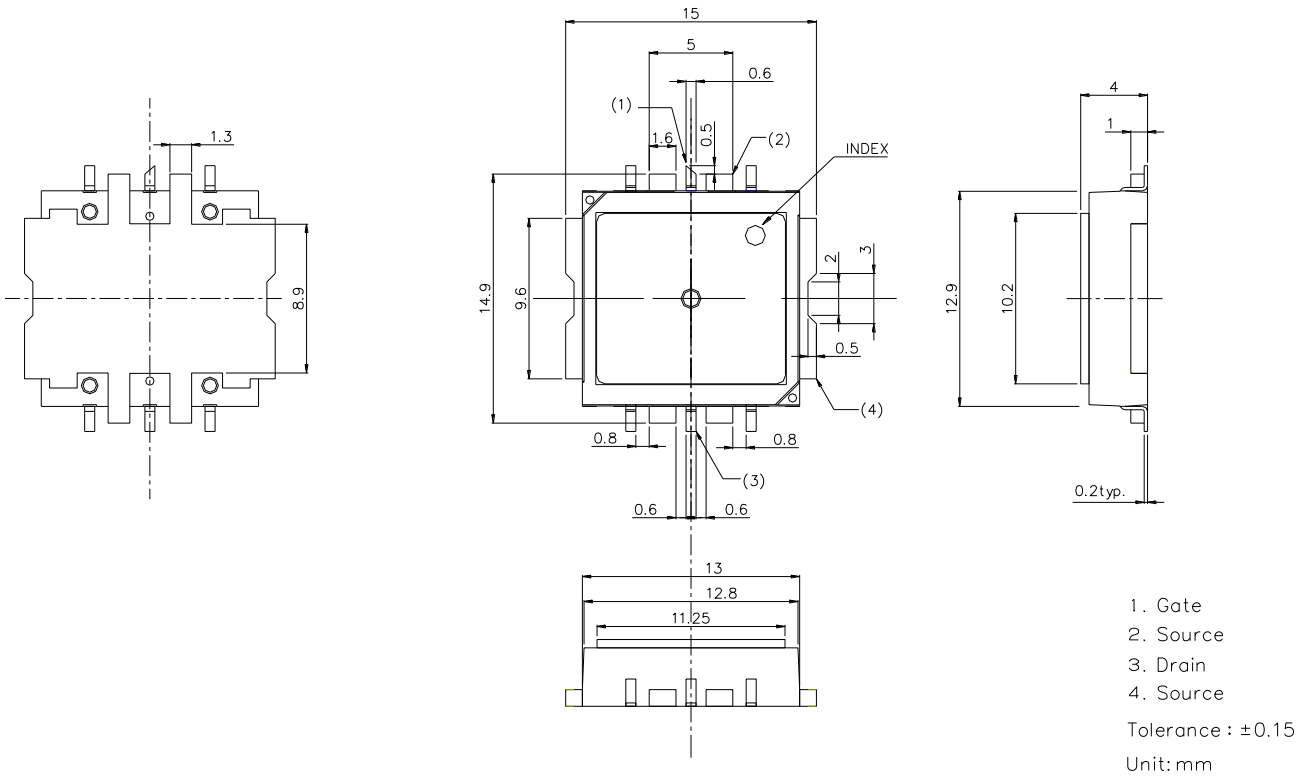
RF Characteristics
Power Derating Curve

Input Power vs. Output Power and Power Added Efficiency
 $V_{DS}=24V, I_{DS(DC)}=1000mA$

Output Power vs. Frequency
 $V_{DS}=24V, I_{DS(DC)}=1000mA$

IMD vs. Output Power
 $V_{DS}=24V, I_{DS(DC)}=1000mA$


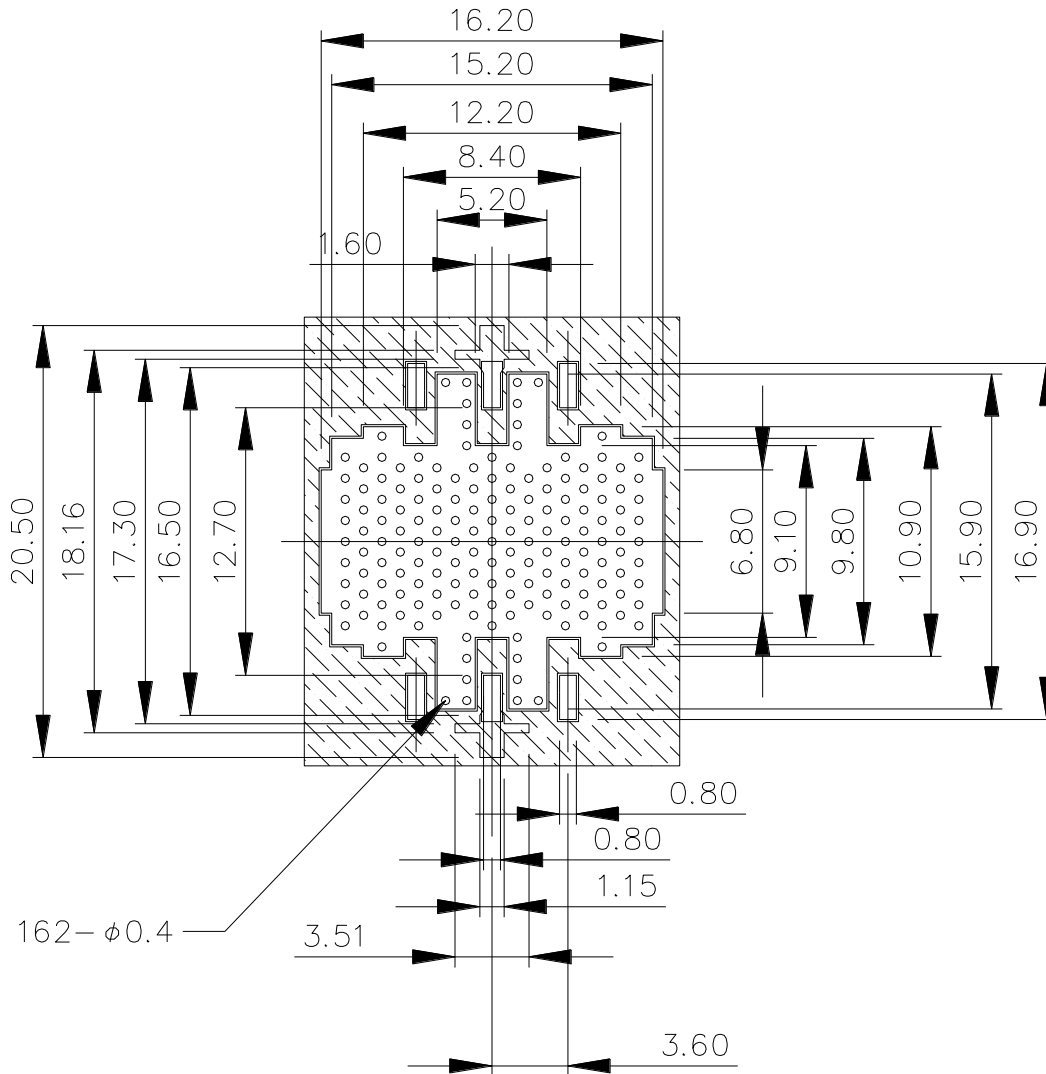
● S-Parameter

Freq.	S11		S21		S12		S22	
	MAG	ANG	MAG	ANG	MAG	ANG	MAG	ANG
5600MHz	0.609	66.1	4.206	-35	0.071	-97.7	0.22	-115.2
5700MHz	0.592	60.1	4.195	-46.7	0.073	-109	0.243	-133.5
5850MHz	0.547	52.2	4.19	-64.8	0.076	-126.3	0.294	-162.7
6000MHz	0.499	48.3	4.21	-82.4	0.082	-143	0.375	171.6
6100MHz	0.497	43.5	4.342	-95.3	0.087	-157.8	0.412	153.9
6200MHz	0.453	37.7	4.363	-109.5	0.087	-172.1	0.455	139.5
6300MHz	0.401	34.5	4.363	-123.2	0.088	174.5	0.493	125.7
6400MHz	0.352	33.8	4.332	-137	0.09	160.8	0.519	111.3
6500MHz	0.309	36.3	4.311	-150.6	0.091	147	0.539	96.8
6600MHz	0.274	41	4.338	-165	0.091	133.3	0.547	82.3
6700MHz	0.252	49.9	4.323	-179.8	0.092	119.1	0.535	66.4
6800MHz	0.255	61.8	4.294	165	0.093	104.1	0.498	49.1
6900MHz	0.294	71.6	4.247	149.2	0.093	88.7	0.445	29.9
7000MHz	0.365	75.9	4.152	132.5	0.092	72.6	0.378	7.3
7100MHz	0.452	74.4	3.993	115.3	0.089	55.7	0.302	-21.1
7200MHz	0.536	68.9	3.736	97.9	0.084	39.1	0.246	-59.7
7300MHz	0.611	62.1	3.414	81.3	0.077	22.7	0.239	-104.6
7400MHz	0.671	54.2	3.073	65.5	0.07	7.6	0.277	-142.7

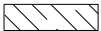


● Package Out line
Case Style : I2C



● PCB Pads and Solder-Resist Pattern


Notes :

1. Laminate : Rogers Corporation R04003, Thickness $t=0.508\text{mm}$, Cu Foil $18\mu\text{m}$.
Finish to copper foil : Ni $0.1\mu\text{m}$ min. / Au $0.1\mu\text{m}$ (Both side).
2.  : Resist

● Package Marking

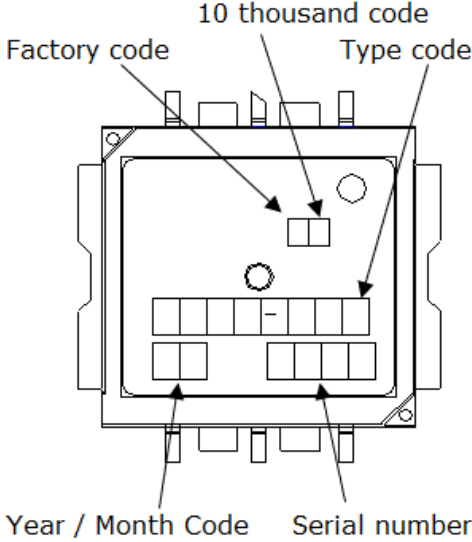
Lot Number : 1st: Year Code
 2nd: Month Code

Year Code

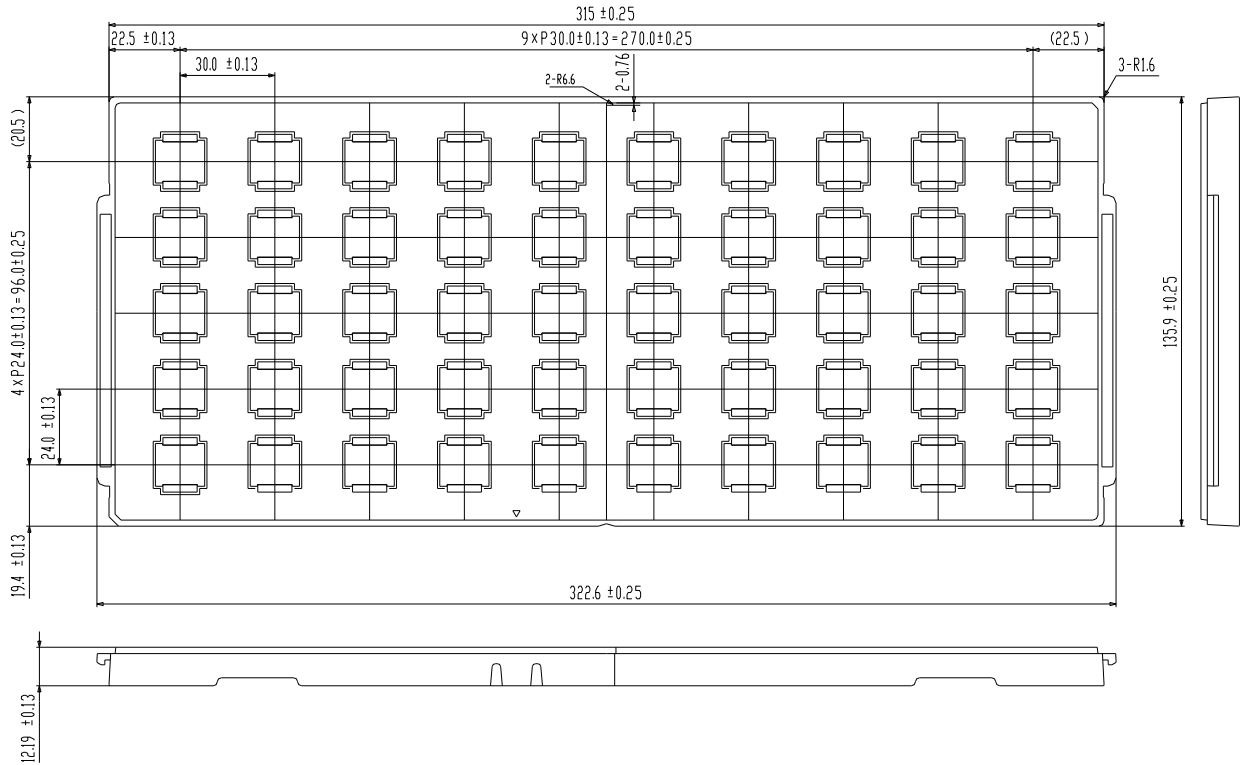
Code	Y	Z	A	B	C	D	E	F	G	H	I	J
Year	2016	2017	2018	2019	2020	2021	2022	2023	2024	2025	2026	2027

Month Code

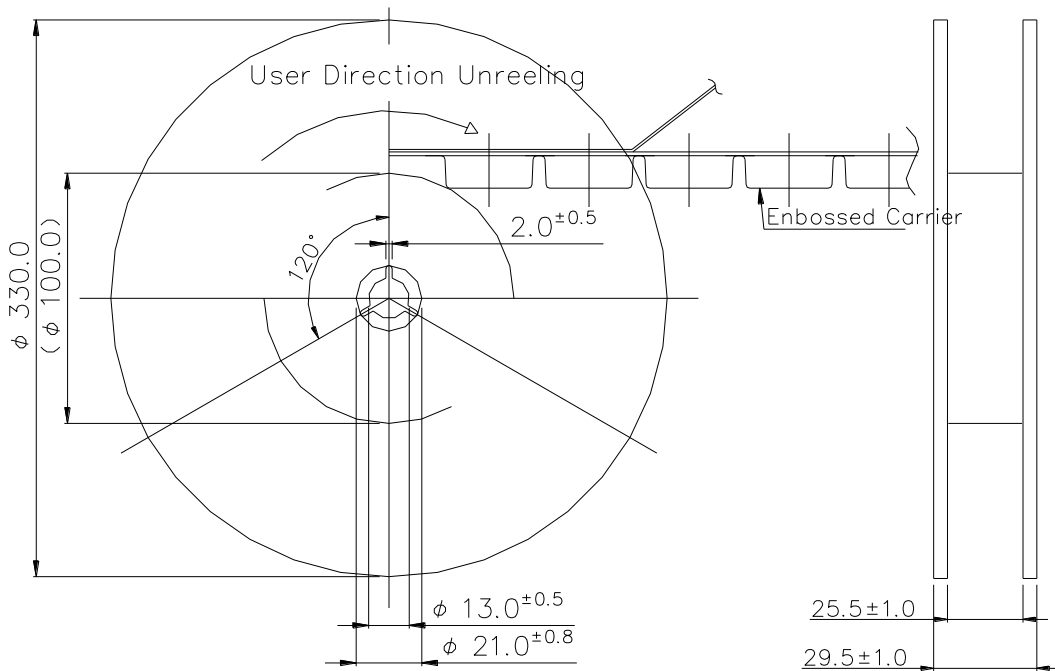
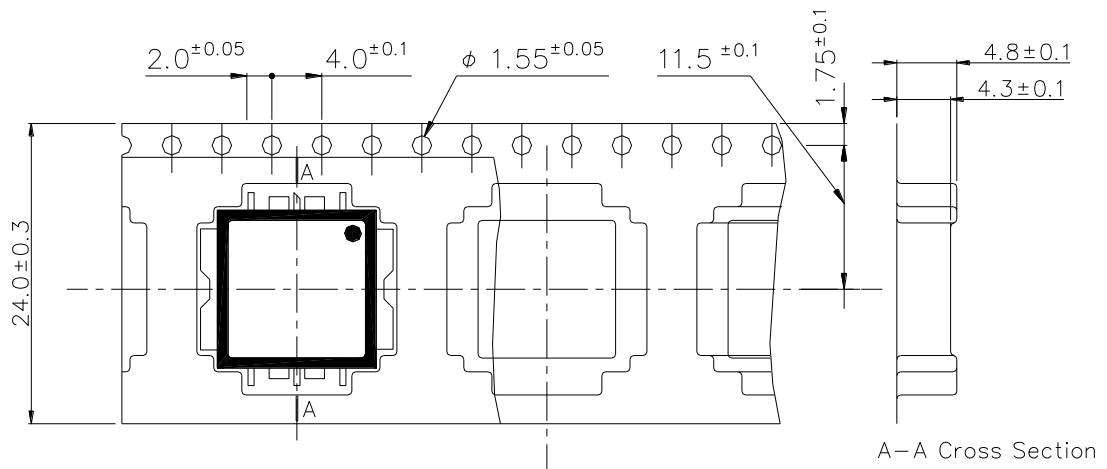
Code	H	M	N	P	R	S	T	U	W	X	Y	Z
Month	1	2	3	4	5	6	7	8	9	10	11	12

PKG	Marking	Type Number	Part Number
I2C	(ex.I2C PKG) 	ELM****_**** SGK****_**** ex. ELM5964-7PS SGK5872-20A	****_**** ****_**** 5964-7PS 5872-20A

● **JEDEC Tray Dimension**
(Part No:SGK5872-20A)



● **Tape/Reel Configuration**
(Part No:SGK5872-20AT)



Quantity: 500pcs/tape
Tape Material: Conductive PS

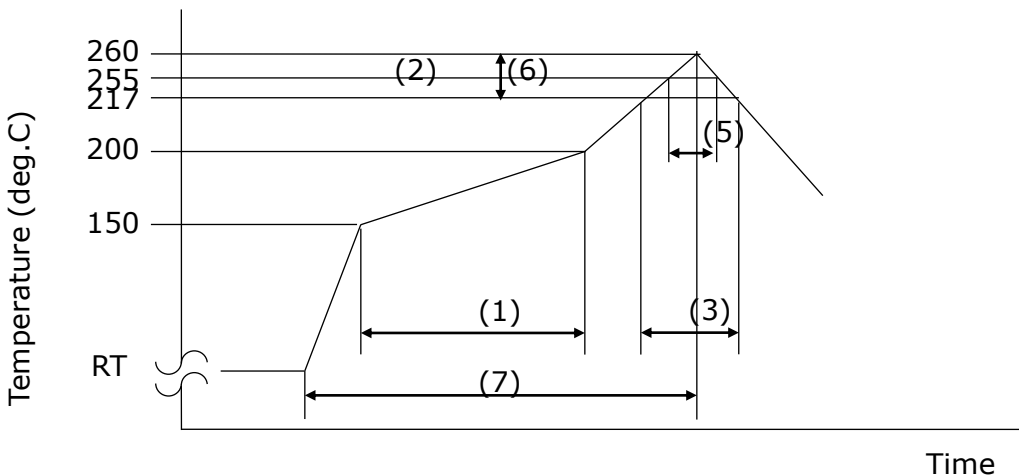
(unit in mm)

●Mounting Method of SMD(Surface Mount Devices) for Lead-free Solder

Mounting Condition

- (1) For soldering, Lead-free solder (Sn-3.0Ag-0.5Cu)*1 or equivalent shall be used.
 (*1: The figure displays with weight %. A predominantly tin-rich alloy with 3.0% silver and 0.5% copper.)
 - (2) A rosin type flux with a chlorine content of 0.2% or less shall be used. The rosin flux with low halogen content is recommended.
 - (3) When soldering, use one of the following time / temperature methods for acceptable solder joints. Make sure the devices have been properly prepared with flux prior soldering.
- * Reflow soldering method (Infrared reflow / Heat circulation reflow / Hot plate reflow):
 Limit solder to 3 reflow cycles because resin is used in the modules manufacturing process. Excessive reflow cycles will effect the resin resulting in a potential failure or latent defect. The recommended reflow temperature profile is shown below. The temperature of the reflow profile must be measured at the device body surface.

Reflow temperature profile and condition:



- | | |
|-------------------------------------|-------------------------------------|
| (1) Preheating: | 150 to 200 deg.C, 60 to 120 seconds |
| (2) Ramp-up Rate: | 3 deg.C /seconds max |
| (3) Liquidous temperature and time: | 217 deg.C, 60 to 150 seconds |
| (4) Peak Temperature: | 260 deg.C |
| (5) Time Peak Temperature: | 255deg.C, 30seconds max |
| (6) Ramp-down Rate: | 6 deg.C /seconds max |
| (7) Time RT to peak temperature: | 8 minutes max |
- * Measurement point: Center of the package body surface

(4) The above-recommended conditions were confirmed using the manufacture's equipment and materials. However, when soldering these products, the soldering condition should be verified by customer using their equipment and materials.

● Humidity Lifetime and fit rate for SGKxxxx-20A

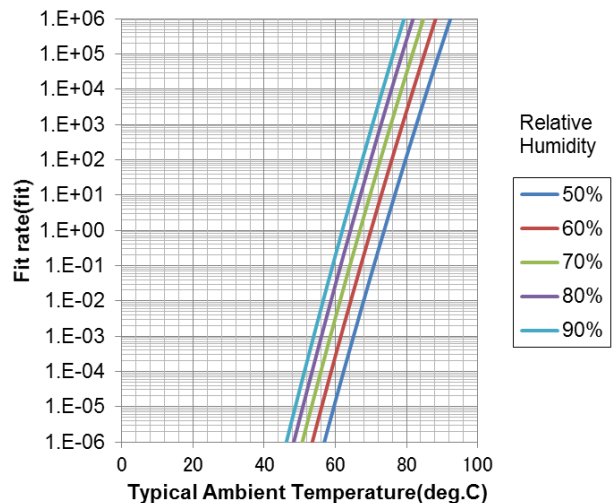
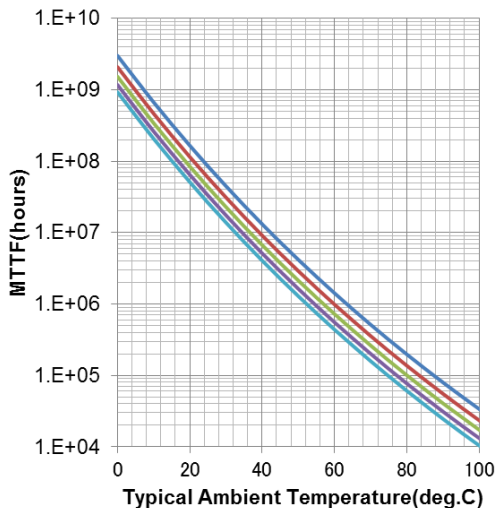
The following graph shows the lifetime of moisture resistance for the SGKxxxx-20A. Each graph indicates the MTTF and Fit rate which calculated from the results of highly accelerated temperature and humidity stress test (HAST).

Representative of device type : SGK5872-20A
 Subject of device type : SGK5872-20A, SGK7185-20A

Field environmental conditions for operation

In case of that SGKxxxx-20A is mounted to non-hermetic package, please refer the following recommendations and notes for design with, and assembly and use of our products.

- Note 1. When drain current cuts off, it should be cut off by drain bias, and not cut off by gate bias only. The humidity lifetime becomes shorter in case of the gate-only cut off operation due to electric field strength interacting with humidity.
- Note 2. SGKxxxx-20A should be used under the environment conditions of no dew condensation. These plots do not apply in the case of liquid absorbed into the resin, whether applied to the part in assembly or as condensate in the application.



Condition: VDS=24V, IDS=200mA

For Safety, Observe the Following Procedures Environmental Management

- Do not put this product into the mouth.
- Do not alter the form of this product into a gas, powder, or liquid through burning, crushing, or chemical processing as these by-products are dangerous to the human body if inhaled, ingested, or swallowed.
- Respect all applicable laws of the country when discarding this product.
This product must be disposed in accordance with methods specified by applicable hazardous waste procedures.

Any information, such as descriptions of a function and examples of application circuits, in this document are presented solely as a reference for the purpose to show examples of operations and uses of Sumitomo Electric semiconductor device(s); Sumitomo Electric does not warrant the proper operation of the device(s) with respect to its use based on such information. When the user develops equipment incorporating the device(s) based on such information, they must assume full responsibility arising out of using such information. Sumitomo Electric assumes no liability for any damages whatsoever arising out of the use of the information.

Any information in this document, including descriptions of function and schematic diagrams, shall not be construed as a license for the use or exercise of any intellectual property right, such as patent right or copyright, or any other right of Sumitomo Electric or any third party nor does Sumitomo Electric warrant non-infringement of any third-party's intellectual property right or other right by using such information. Sumitomo Electric assumes no liability for any infringement of the intellectual property rights or other rights of third parties which would result from the use of information contained herein.

The products described in this document are designed, developed and manufactured as contemplated for general use, including, without limitation, ordinary industrial use, general office use, personal use, and household use, but are not designed, developed and manufactured as contemplated (1) for use accompanying fatal risks or dangers that, unless extremely high safety is secured, could have a serious effect to the public, and could lead directly to death, personal injury, severe physical damage or other loss (i.e., nuclear reaction control in nuclear facility, aircraft flight control, air traffic control, mass transport control, medical life support system, missile launch control in weapon system), or (2) for use requiring extremely high reliability (i.e., submersible repeater and artificial satellite). Please note that Sumitomo Electric will not be liable to the user and/or any third party for any claims or damages arising from the aforementioned uses of the products.

Any semiconductor devices have an inherent chance of failure. You must protect against injury, damage or loss from such failures by incorporating safety design measures into your facility and equipment such as redundancy, fire protection, and prevention of excessive current levels and other abnormal operating conditions.

If any products described in this document represent goods or technologies subject to certain restrictions on export under the Foreign Exchange and Foreign Trade Law of Japan, the prior authorization of the Japanese government will be required for export of those products from Japan.

<http://www.sedi.co.jp/>

ATTENTION

Information in this document is subject to change without notice.